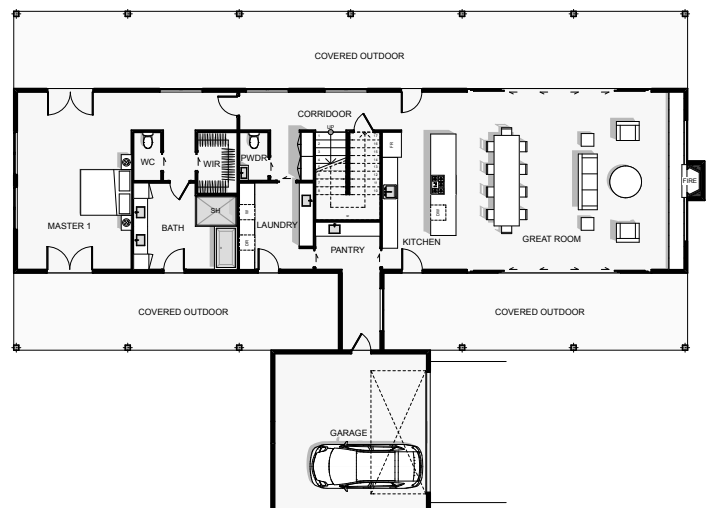




## Floor Area: 354m<sup>2</sup>

This stunning home has large windows around the living, dining and kitchen that lets in lots of natural light. A study sits above the kitchen on a mezzanine. In the main gathering areas, it's easy to move between areas. The split-bedroom layout grants lots of privacy to the deluxe master suite, which boasts a walk-in closet, separate bath, shower, and two basins.

Upstairs there are two more bedrooms, both with their very own ensuite bathrooms. The walk-through pantry which also provides access to the laundry and internal access to the garage. These features and many more make this a home that is sure to bring you and your family a wonderful living experience.



### Contact Andre Mayo

**Mobile:** 021 201 9483

**Phone:** 0800 CASSA HOMES

**Email:** info@cassahomes.co.nz

**Website:** www.cassahomes.co.nz