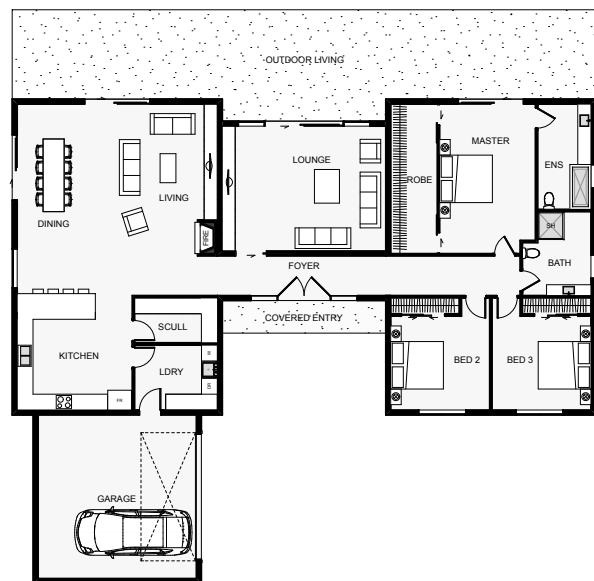




Floor Area: 274m²

The large inviting double entry is just one feature that makes this beautiful three bedroom home irresistible. Sleeping and living areas are neatly arranged into two separate wings while the exquisite master suite includes a spacious walk in closet and bathroom.

This wonderful home has a large open kitchen with a scullery to match. There is a second private living area in the centre of this home. The laundry is close to the kitchen for easy access and provides an internal walk through to the two car garage. With so much to offer, this home is sure to please.



Contact Andre Mayo

Mobile: 021 201 9483

Phone: 0800 CASSA HOMES

Email: info@cassahomes.co.nz

Website: www.cassahomes.co.nz