

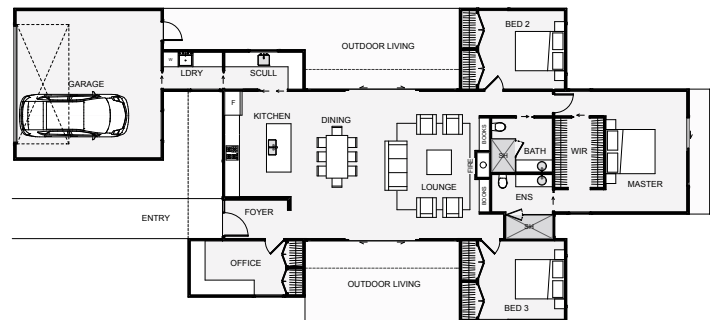


## Floor Area: 198m<sup>2</sup>

This home is semi symmetrical in shape, looks great with its length and includes very separate bedrooms. All bathroom plumbing is condensed in one location which keeps the pipework simple.

The scullery is cleverly located as you walk in from the garage and through the laundry making grocery shopping a breeze.

The living layout is simple yet effective and depending on the day, wind or time, you can pick your outdoor spot of choice which are both sheltered in design. The *Purangi* is a home with lots to offer.



### Contact Andre Mayo

**Mobile:** 021 201 9483

**Phone:** 0800 CASSA HOMES

**Email:** info@cassahomes.co.nz

**Website:** www.cassahomes.co.nz