

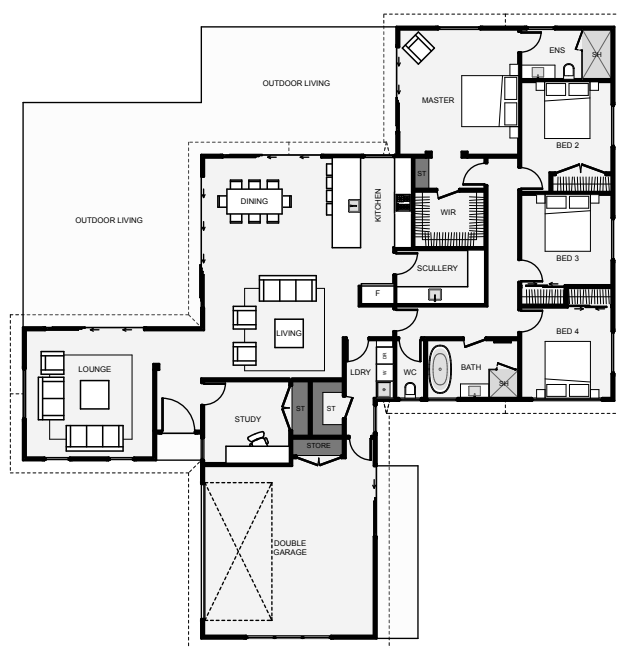


Floor Area: 241m²

The Saddleback has lots of cool features.

Firstly, this home has dual living separated from the foyer, allowing you to direct guests to either lounge or even straight into the study which is smartly located right off the foyer.

This home also includes a good size scullery, a separate laundry, built-in garage storage, a large walk-in wardrobe and plenty of outdoor space.



Contact Andre Mayo

Mobile: 021 201 9483

Phone: 0800 CASSA HOMES

Email: info@cassahomes.co.nz

Website: www.cassahomes.co.nz